

Berrycoombe Newsletter



Message from Headteacher

The children have been fantastic this week. We have had several more floods, some smelly carpets in the library, and quite a few unexpected drips. Despite this the children have remained focused on their learning. Listening to them talk about what they have learning this half term has been delightful and as always the children's ability to hold onto their learning constantly impresses me.

Have a lovely half term

We are looking forward to seeing all the children back on **Monday** the 19th of February.

Dates for your Diary

12 Feb	-Half Term
19th Feb	-First day back after half term
27th Feb	SATS Information evening 5pm
6th Mar	Berrycoombe's Big Book Event
7th Mar	World Book Day
11th Mar	Big Walk and Wheel (11th 17th)
13th March	Y6 Parents consultations

Can you help

Have you seen this penny? A student in year 5 brought this coin in to show his friends as part of the world war 2 topic. Sadly he dropped it and I am asking if any children have found it and come home with it today. The year 5 student is really upset as the coin has sentimental value and it's return would be really appreciated.





Building Learning Power award

Year R	River - resilience when sounding out words that she wants to write.
Year 1	Kieren – resilience in writing independently
Year 2	Florie—excellent resilience with handwriting
Year 3	Thomas—using great resourcefulness in English
Year 4	Anais and Claudia—collaboration in Maths
Year 5	Connor—super published writing
Year 6	Scarlett—the most amazing writing resilience

Reminder about lates

We are experiencing a high number of children arriving late

Some children are arriving late first thing in the morning. For the younger children this means they are missing out on the lesson where they learn their letter sounds (Read Write Inc). This has a massive impact on their ability to read and means that these children quickly begin to fall behind. For the older children they miss out on their fluency lesson and again this has a huge impact on their reading progress. They begin to fall behind their peers. As a matter of urgency can all families ensure their children arrive at school by 8:45 am.

Attendance

Sadly our attendance has been impacted by children arriving late.

Reception	74%
Year 1	89%
Year 2	85%
Year 3	94%
Year 4	93%
Year 5	86%
Year 6	87%

What's On and Notices

School Support Careers

FULLY FUNDED Online Course

Available in Levels 1, 2 & 3

Education & Skills Funding Agency

Are you looking for a job that fits in around your family? Gain the necessary qualifications to support you, fully funded by the ESFA (Education Skills Funding Agency).

Levels 1, 2 & 3 for School Support Course with a Guaranteed Job Interview.

- **Our classes are based online - Run only in term time - During school hours to fit in with the school run -**

Course Times

- Total of 5 days per week (Mon-Fri) for 6 weeks
- There are 2 lessons per day (9.30am – 11am) & (1pm – 2pm)
- Must have internet access and a laptop or tablet.

- **No prior experience necessary -**

Eligibility Criteria

- Must Be Aged 19+
- Must Claim Benefits (Universal Credit, JSA, ESA, PIP, Income Support, Housing Benefits or any type of Tax Credit including Child Tax Credit). If you live in Merseyside, you do not need to claim any benefits.
- You Can't be a student or an International Student
- You Must have lived in the UK for a Minimum of 3 Years (Except if you are from the Ukraine).

www.studysmartuk.online

Join in the celebration and discover how you can change your world by changing your journey

- ✔ Be active and feel more energised
- ✔ Help the environment by replacing a car journey
- ✔ Help your school win some fantastic prizes

Are you taking part in the UK's **biggest** walking, wheeling, scooting and cycling to school competition?

www.BigWalkAndWheel.org.uk

Headline sponsor: SCHWALBE

sustrans
FOR THE MERRYWELL

The Big Berrycoombe Roof Build

On Target to finish at the end of term.

We are in phase 3 now but will be moving to phase 4 soon.

Thank you for all your patience and support.

Arrangements planned works Phase 4

- Year 2 into spare classroom
- Year 4 back to normal classroom
- Year 1 have break out space Hall

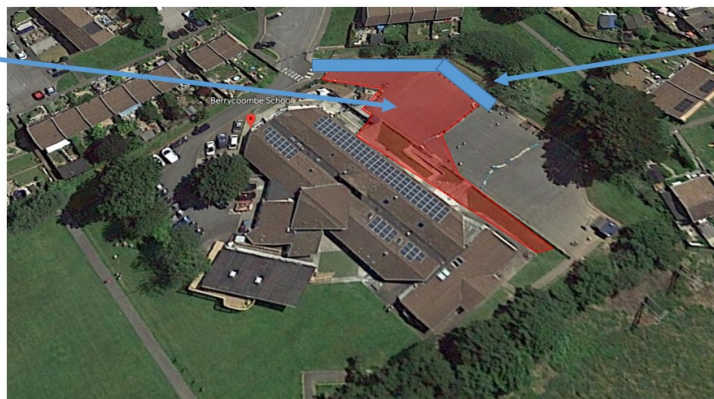
Lunches in classroom for phase 4 and phase 5



Impact outdoors

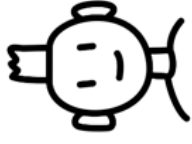
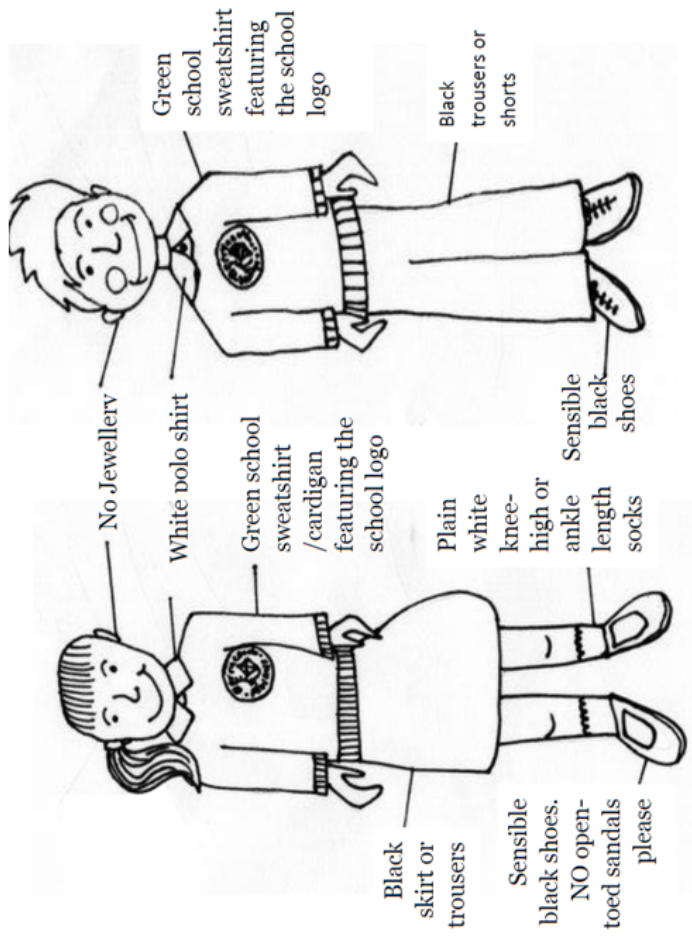
Lose access to this area throughout works

Building site office and work space



Pedestrian walk way

School Uniform



And please...
No crazy hair.

Why?

It is good preparation for Secondary School where crazy hair is not allowed. Long hair needs to be safe, tied back if appropriate.

Children find it very distracting when someone in their class arrives with a new crazy hair colour.

We believe that uniform creates a sense of belonging and community.

In summer a green-check summer-dress can also be worn with the school cardigan.

Waterproof Book bags are available at £3.75 and P.E. Bags at £3.00 are also available.

Cardigans, jumpers and Book Bags can be purchased from the School Office between 8.15am - 8:45am

and 3.00pm - 3.15pm each day. School sweat shirts cost £10 and cardigans cost £11 (the wholesale

cost). There is a selection of freshly washed second hand uniform available from our PSA (Michelle

Hunt) upon request (free or a nominal amount).!

All uniform should be clearly marked with your child's name.