



“**EDUCATING** the mind  
without **EDUCATING**  
the heart is no education  
at all.”

Aristotle

## Letter from the Head Teacher

On behalf of the Children, Staff and Governors we would like to welcome you to Berrycoombe Primary School.



**Craig Robertson**

Head Teacher

If you are new, or curious about our school please read our prospectus or visit our website at-

<http://www.berrycoombeschool.co.uk/website/home;>

both give you a flavour of the wonderful learning that takes place here.

At Berrycoombe we believe that education is important because it gives your child freedom and choice both now and in the future. Education empowers children. We are committed in ensuring that your child makes an excellent start to their learning.

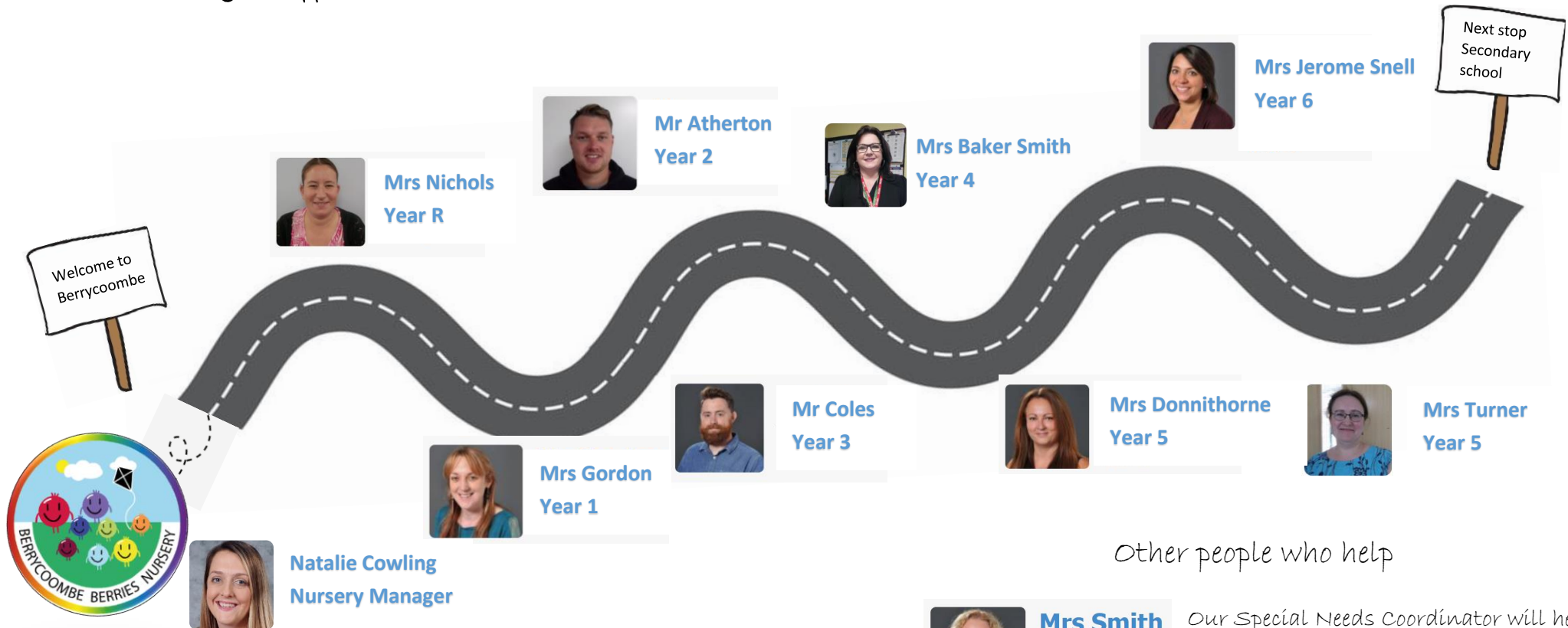
At Berrycoombe we have high aspirations and hopes for your child. We will ensure they love their learning and have fun, that they feel safe at school and fulfil their full academic potential.

We are friendly, informal and always willing to listen, support and help.

Kind Regard

Craig Robertson

## Teaching Staff



We are not a big school.

Our classes with the youngest children (YR, Y1, Y2 Y3) are no bigger than 30.

We have one entry class per year group.

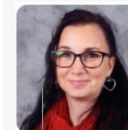
We know every child's name and work with each child as an individual.

## Other people who help



**Mrs Smith**  
SENCO

Our Special Needs Coordinator will help you and your child if you need something different or extra to make great progress



**Mrs Hunt**  
Parent Support Advisor

Our parent Support Advisor can offer you help with a whole range of parenting issues



**Mrs Williams**  
Business Manager



**Ms Natalie Dowling**  
Secretary

Our office team are happy to help at any time

What we stand for

Children are our number one priority



Literacy is really important. It unlocks learning now and in the future



School is safe and children feel safe



Learning is fun and memorable



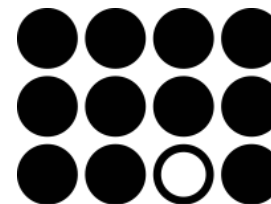
Children are kind and empowered



Every child makes exceptional progress



Every child needs something different to make exceptional progress



Children own their learning and understand how they learn



## Our governors



Governor name	Type of Governor
Hannah Fugill; Chair of Governors	Co-opted Governor
Alexander Wilton; Vice Chair	Co-opted Governor
Michelle Hunt	Staff Governor
Fiona Whayman	Parent Governor
Lucinda Jerome Snell (Year 6 teacher)	Staff Governor
Judith Luker	Co-opted Governor
Debbie Henderson	Co-opted Governor
Craig Robertson	Head Teacher

Governors are the school's critical friends. Supportive but challenging. They support us in making good decisions that are right for the whole school community.

They meet 6 times a year, one every half term and have a different focus for each meeting.

They are friendly, supportive and very approachable. If you want to talk to a Governor just ask at the office.

If you are interested in becoming a Governor let the office team know.

# School History

King Charles III opened our school in 1980.



**CORNWALL**  
Berrycoombe C.P. School  
took part in  
**"SONGS OF PRAISE"**  
at Truro Cathedral  
on Monday, 22nd May, 1989.  
Secretary for Education  
Lord Bishop of Truro



BERRYCOOMBE C.P. SCHOOL  
ANNUAL SPECIFIC  
AT  
HILLSIDE PARK  
SAT 21st JUNE, 1978. 1.30 p.m.  
representative from Phillips Electrical  
Present the new Phillips Cup, to be  
usually, to the winning house.



For over 40 years, Berrycoombe primary has been a proud part of our local community

# Our Curriculum and school day



Morning 8:45 am start



Afternoon 3:15 pm finish

For a large part of the the **morning** we focus on reading and writing



Younger children learn these things through play and learn their phonics

cat zoo

Every class has a class book, which they read every day



We discuss and explore this book together. We use our class book to give us ideas for our writing

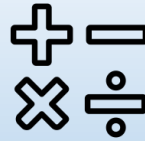


We talk about our writing with our teacher in a special meeting and we have writing targets to get better



Break

For the rest of the morning we focus on maths



As a school we have a big focus on arithmetic as this will power the rest of your child's mathematical thinking.



Lunch

For the afternoon we focus on the other areas of the curriculum and the class topic

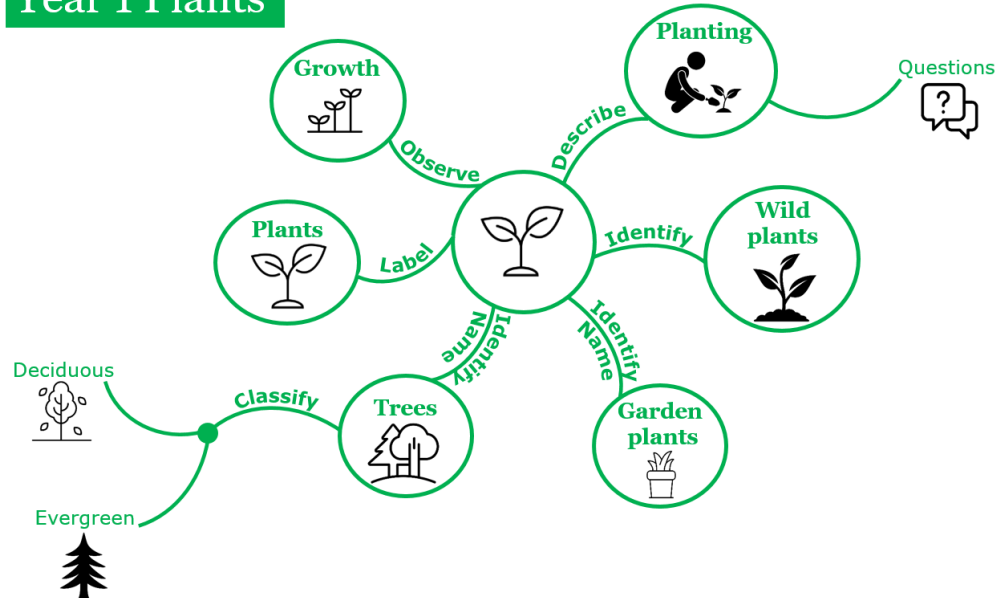
Art History Geography Programming

French PE DT Science

We also have Religious Education and Personnel Social and Emotional education in the afternoons.

We learn a lot in a school day so to help your child remember their learning we use mind maps. These help your child remember and recall key information they have learnt now and in the future.

## Year 1 Plants



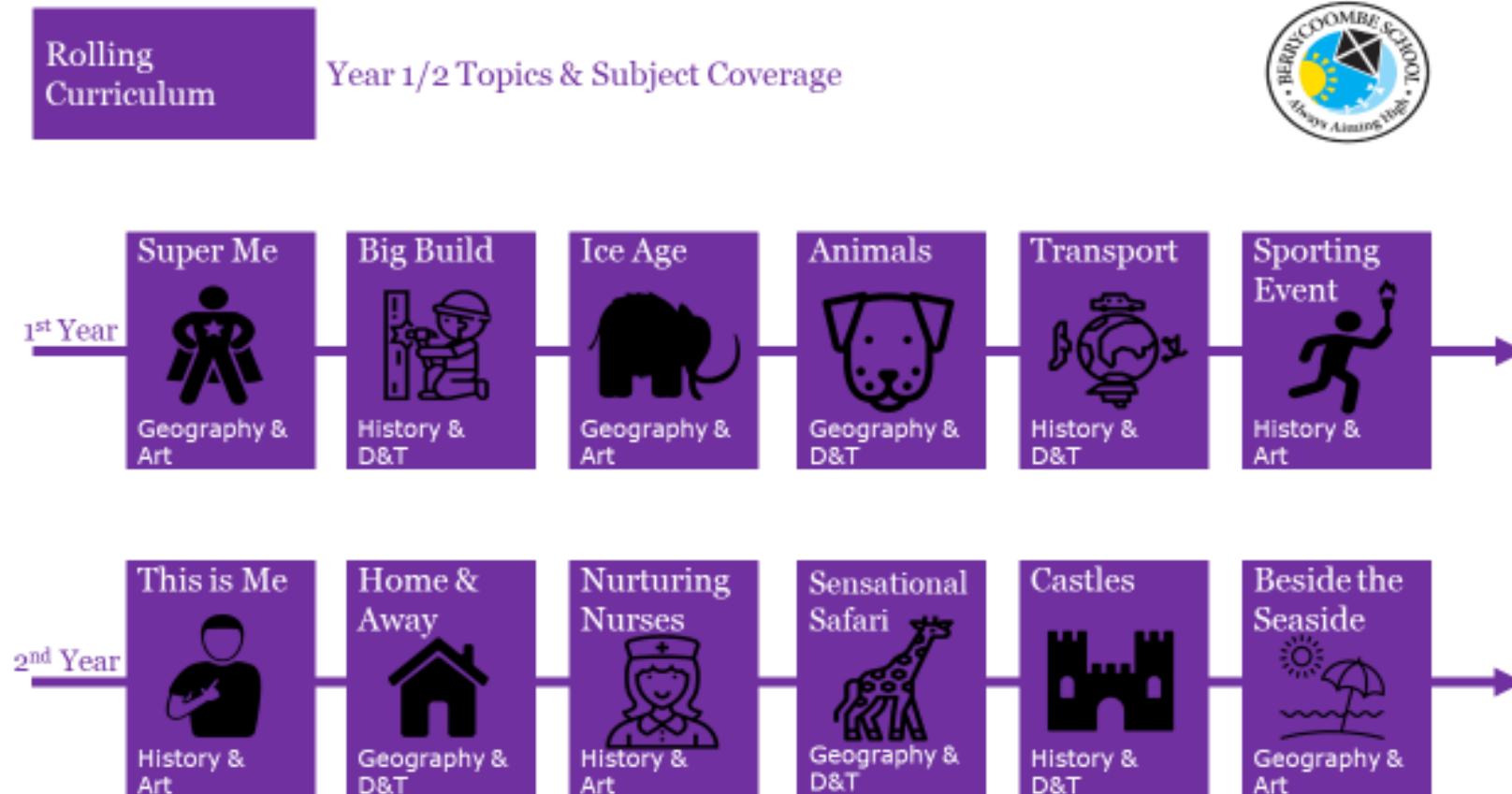
Each half term we have a different topic

We teach the National Curriculum but most importantly, we make sure it is fun and memorable.

We have a two year rolling Curriculum introduced in 2019-2020 which started with the Second Year

More details of what each class is learning can be found on the class webpage on our website

Year 1 and 2





## Year 3 and 4

## Rolling Curriculum

## Year 3/4 Topics &amp; Subject Coverage



## Year 5 and 6

## Rolling Curriculum

## Year 5/6 Topics &amp; Subject Coverage



Reception and Nursery class change their learning topic regularly in response to the children's interests. From Dinosaurs to Vets. Whatever the children are excited about becomes a topic focus.

## Launch Days

Berrycoombe Primary prides itself on taking its commitment to making learning fun seriously. Every half term each class has a Launch Day to start their new topic. These days are exciting memorable moments, which the children talk about for the year to come.



## Assemblies

We have Whole School Assemblies twice a week.

We also have class based Assemblies.

Our Assemblies are inclusive of all faiths and beliefs. They are 'broadly Christian' and focus on the moral obligations we have to each other as part of a community (as a school, locally and globally)

Class Assemblies	Whole School
<p>Classes explore what has gone well in the week.</p> <p>They also explore and discuss issues relevant to the class for example</p> <ul style="list-style-type: none"> <li>• kindness,</li> <li>• how we help each other</li> <li>• how we get unstuck</li> </ul> 	<p>We have <b>Celebration Assemblies</b> every week on Friday.</p> <p>In these Assemblies we celebrate acts of kindness, amazing work and incredible achievements (like making really good progress). We also celebrate children who have demonstrated really good learning skills. We call these skills Building Learning Power skills.</p>  <p>We also have <b>values Assemblies</b>. Our values are important. Every class has a gem jar and every day whenever a child demonstrates one of the school values a gem gets placed in the jar. Each week we come together to see how each class has done.</p> <div style="display: flex; flex-wrap: wrap; justify-content: space-around;"> <div style="border: 1px solid black; border-radius: 10px; padding: 5px; width: 45%; text-align: center;"> <p><b>Kindness</b></p> <p>What does kindness look like?</p> </div> <div style="border: 1px solid black; border-radius: 10px; padding: 5px; width: 45%; text-align: center;"> <p><b>Collaboration</b></p> <p>How to work well with others</p> </div> <div style="border: 1px solid black; border-radius: 10px; padding: 5px; width: 45%; text-align: center;"> <p><b>Resilience</b></p> <p>How to persevere and never give up</p> </div> <div style="border: 1px solid black; border-radius: 10px; padding: 5px; width: 45%; text-align: center;"> <p><b>Aiming High</b></p> <p>Ambition and achieving your goals</p> </div> <div style="border: 1px solid black; border-radius: 10px; padding: 5px; width: 45%; text-align: center;"> <p><b>Respect</b></p> <p>What does respect look like?</p> </div> <div style="border: 1px solid black; border-radius: 10px; padding: 5px; width: 45%; text-align: center;"> <p><b>Independence</b></p> <p>How to be motivated and self-reliant?</p> </div> </div> 

## Reception and Nursery class (Your first years at school)

These are incredibly important years, and the start of an amazing Journey.



**Mrs Nichols**  
**Year R**

Reception and Nursery teaches all the Early Learning goals so your child has an excellent start to their learning journey. We ensure teaching is-

- Fun and playful
- Nurturing
- Collaborative

Reception and Nursery have lots of adults -

- Lots of adults for children to talk to and get support from
- A play based Curriculum where children play and learn
- Access to Outdoor Learning throughout the day
- Forest Schools sessions weekly
- A welcoming and supportive Team who are happy to help you support your child to make a good start to their learning journey
- Early teaching of Reading. In Reception (and towards the end of Nursery) children begin to learn their letter sounds so they can start to read. We use a Phonics Program called Read Write Inc. We also read lots and lots and lots of books.



a b c

## Religious Education



The school delivers the agreed Cornwall Syllabus. R.E is taught to inform children about the belief systems of the major faith groups including Christianity, Judaism, Hinduism, Buddhism and Sikhism. No assumption is made about any child's belief system. If for any reason you wish to remove your child from R.E, please contact the Head Teacher.

## Relationship and sex education



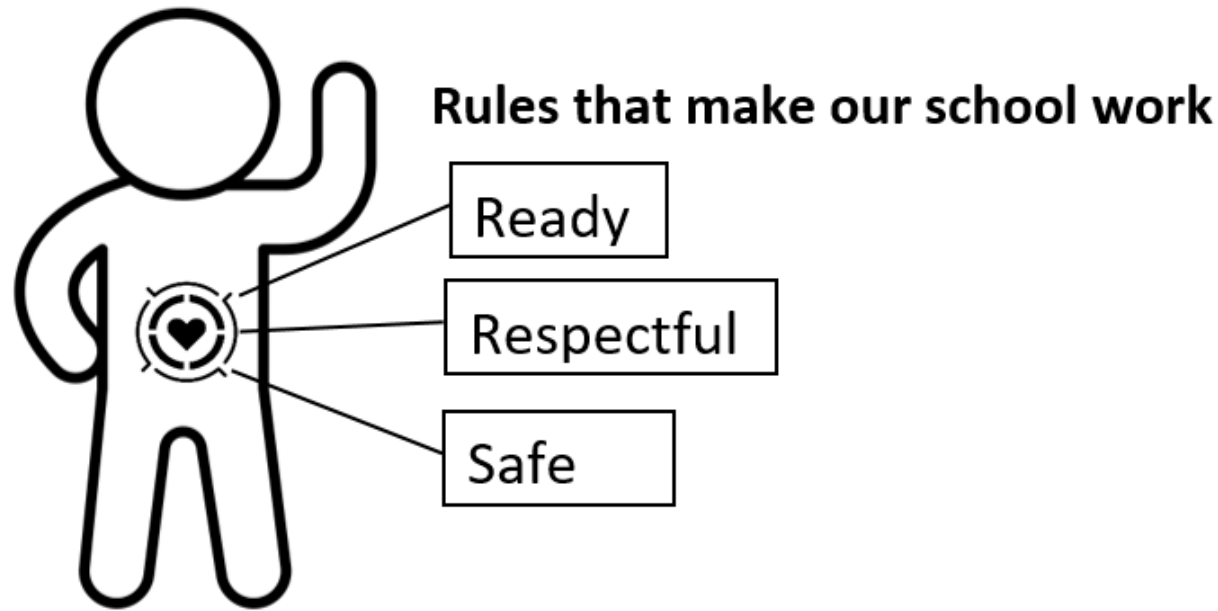
Children begin learning about their bodies from the moment they enter the school (e.g. the parts of the body and how their body works). As the children get older (Year 5 and 6) the curriculum starts preparing them for puberty and the different types of relationships that people have. This work with older children is always sensitive, thoughtful and age-appropriate. Where areas relating specifically to Puberty, Relationship and Sex Education are covered, parents will be notified in advance by letter to allow you to prepare for any questions the children might have. The Relationship and Sex Education Curriculum will always be presented in the context of family life, loving relationships and respect for others.

## Behaviour



Good behaviour is essential for a caring community and at Berrycoombe we have one simple rule for all; to treat others with respect and kindness. We have a positive approach to discipline, rewarding good behaviour and discouraging the bad. We realise that school and home must work together to develop positive attitudes in our children, and we are very grateful for your help with this. The school takes all incidents of bullying very seriously. Please inform a member of Staff immediately if you suspect that your child is being bullied.

How we support behaviour is simple and supportive based on positive relationships.



### **At Berrycoombe Adults will**

- Get to know your children really well
- Meet and greet and establish a connection daily
- Be positive and specific about what good looks like
- Use visual cues like the 'good as gold board' to ensure no one is left behind
- Have a calm response to behavioural challenge with take up time and be quick to spot a child who is beginning to turn it around
- Follow up with a reflective conversation with the child- What happened?  
How did you turn it around? What could you do next time?

*We celebrate the good and support children who are struggling.*

## Recognition and rewards

**(We see more of what we celebrate)**



### Class and whole school

- Specific recognition and praise
- Gems in a jar for our half termly value focus
- Good as gold boards, platinum and diamond
- Assembly awards
- Wall of kindness display
- Regular communication home at end of day
- Whole class special time- negotiated and agreed with children

## How we relate to children









### We use the W.I.N.E. acronym-

- **Wonder** (I wonder if it felt that no one understood you?)
- **Imagine** (I imagine it was horrible when that happened?)
- **Notice** (I noticed you cheered up when we talked about your brother.)
- **Empathise** (That sounds frightening when they left you alone.)



If children are struggling, we are very clear, supportive and consistent.

## How we support children to change their behaviour (6 steps)

	There is take up time between each step-	
1	<b>Redirection-</b> gentle nudge in the right direction. We state the behaviour we want to see. Notice those doing the right thing.	 Low level
2	<b>Reminder</b> of the expectation we want to see often related to basic rules- Ready, respectful and safe.	 Low level
3	<b>Caution 1-</b> 'Turn it around'- A private chat. We state the issue and outline the consequence. (e.g. You are not ready to learn. You might need to stay in at playtime to catch up)	
4	<b>Caution 2-</b> A chance to reflect- Children will stay in at play. A chance to reflect on behaviour. This will be a private conversation, discreet and away from other children and about five minutes (We use the W.I.N.E. acronym) for example- What is going on? Are you Ok? It is not like you. You seem to be struggling.	5 
5	<b>Caution 3-</b> Reflect and catch up- Teachers have the five minute chat from Step 3 and children stay in an extra five minutes to catch up on work not completed.	10 
6	<b>Leave to reflect-</b> For children really struggling- Time out of class with the Nurture Team to think about what went and how we can help.	

**Where a child has had to leave or repeatedly had a caution, we will phone you so you are involved in the process of supporting your child.**

## Emotional support



**Mrs Trudgeon**

Nurture Team



**Mrs Hunt**

Nurture Team

School can be a difficult and challenging place for some children some of the time. This can be for a wide variety of reasons sometimes completely unrelated to school. Berrycoombe has a nurture team. Two full time Teaching Assistants who are qualified THRIVE practitioners. In addition to the caring and nurturing class based teams, they can provide support to children who are struggling emotionally. They have a dedicated room called the 'Nest'

## After (and before) School Clubs

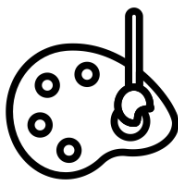
We have a wide variety of clubs Before and After school.



**Breakfast Club**, For Busy families. Breakfast Club runs every day from 7:45 am-8:45 am. There is no need to book. Healthy Cereal, bagels and lots of fun activities. Breakfast club is £2.50 per child and there is no need to book.



**Sports clubs** Sports Clubs run every week after school run by qualified Sport Coaches. These clubs change throughout the year in response to the requests that children make through Schools Council but include, football, multi sports, tag rugby, street surfing.



**Other clubs** The school also runs a wide variety of other clubs from Art Club and Film Club to Forest School Club. These clubs change and develop throughout the year as children express an interest through Schools Council.



**Home from Home** After school from 3:15 pm to 5:00 pm the school runs an After School Club. Staffed by our caring and nurturing team. Children can relax, do crafts, and games and unwind. This club is booked a month in advance and costs £8 a session.

## Payment



The school is cashless. We use Parent Pay to allow parents to pay for things like school dinners and uniform. It is simple and easy to use. You simply sign up to the service, log onto the Berrycoombe page and you will see a list of all the things available to purchase.

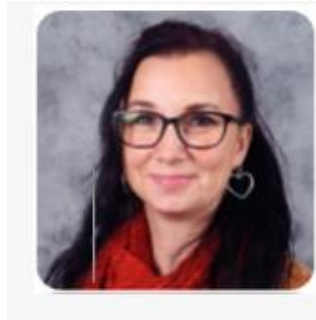
## School council



Berrycoombe has an active School Council. Each year each class has an election where every child votes. They elect their School Councillors who attend fortnightly School Council Meetings. During these meetings, the children discuss and and make important decisions including-

- Playground equipment selection
- School meal selection
- Special Event Week selection

## Parental Support Advisor



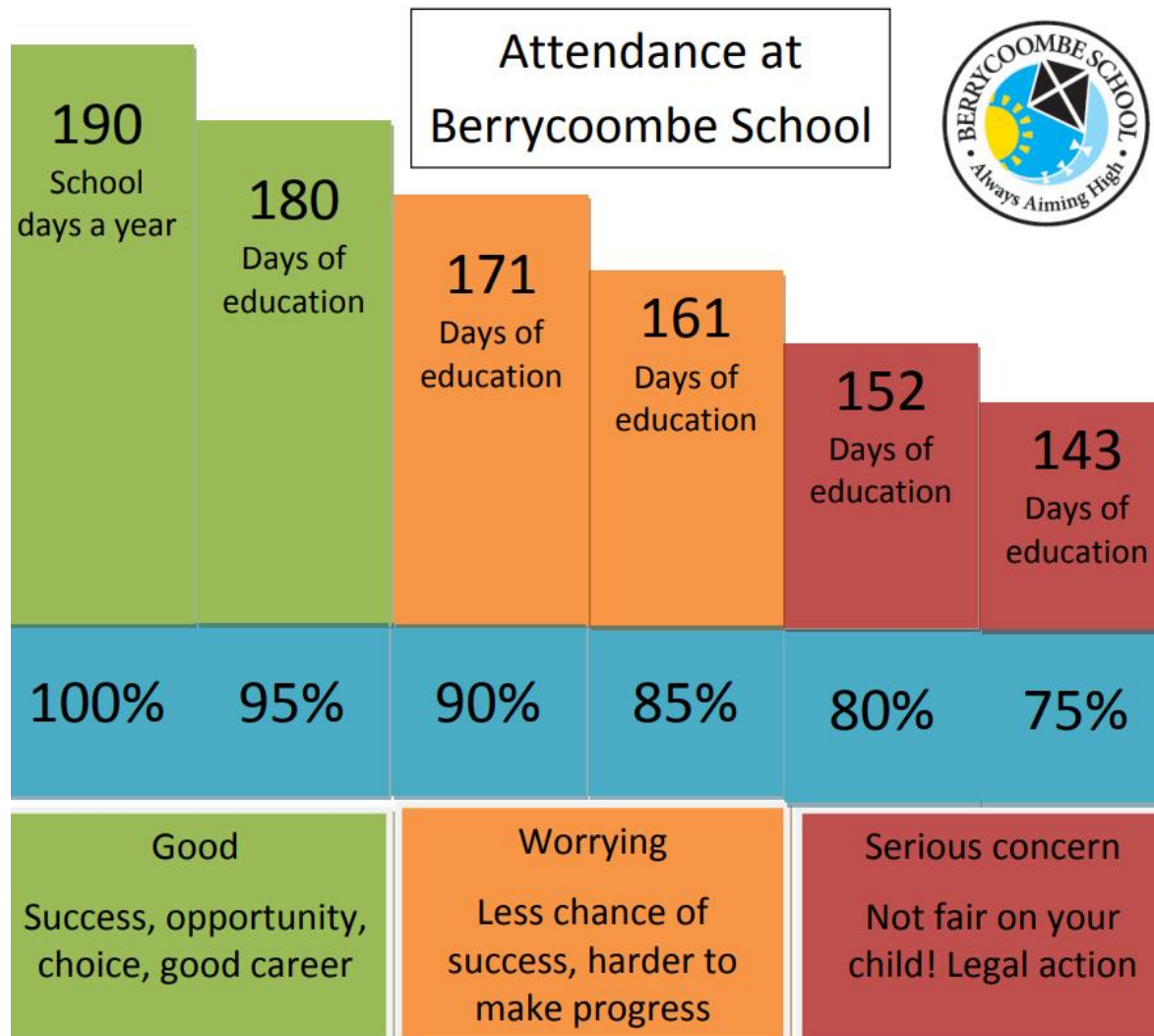
**Mrs Hunt**  
**Parent Support**  
**Advisor**

Michelle is covering our usual PSA's maternity. She works with parents offering a whole range of support from housing, benefits to behaviour and parenting. This service is confidential and details will not be shared with the school unless you ask them to be.

The PSA can be contacted on 07917611469 or by email at

[psa@berrycoombe.cornwall.sch.uk](mailto:psa@berrycoombe.cornwall.sch.uk)

Attendance



*'Absence makes the learning harder'*

Good attendance helps your child to be happy at school and to be successful and happy now and in the future.

**School Matters!**



Telephone the office if your child is going to be absent.

Every day at school matters. Only keep your child off school if they are ill.

## Assessment

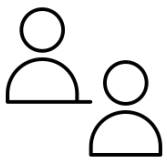


At Berrycoombe we continually assess and monitor your child's progress in order to best match the Curriculum and activities to the individual needs of each pupil. As well as the day to day observations that Teachers and Teaching Assistants make about each child's learning we also use the following assessments-

- We use small fortnightly Arithmetic Tests and End of Term tests to assess Maths.
- We use Accelerated Reader to track progress in Reading along with End of Term Reading Assessments.
- For younger children, Phonics progress is assessed during a one to one screening activity with our Phonics Lead every six weeks.
- Writing is assessed during individual Pupil Teacher Progress meetings which happen weekly. Children identify what has gone well and agree targets for the following week. When they use their target they highlight it in pink in their writing books.

We use a computer program called 'Target Tracker' to identify progress over time. This helps in the early identification of children with Special Educational Needs and helps us to stretch and develop all children in our care.

## Parent/Teacher Consultations



We have Parent/Teacher consultation days in the Autumn and Spring terms and will give a simple and clearly written Report of your child's progress at the end of the Summer Term. In addition, we strive to be informal and accessible to parents and are very happy to discuss any issues or concerns. Class teachers are available at the beginning and end of the school day in their classrooms and the class teachers for Key stage 2 children (Year 3, Year 4, Year 5 and Year 6) will follow their class onto the playground every day in case there is something you want to discuss.

## Special Educational Needs



**Mrs Smith**  
SENCO

Berrycoombe Primary School prides itself on provision for pupils with additional needs. Our most recent Ofsted Report concluded that the quality of learning for pupils with SEN and/or disabilities and their progress was "good" because of "the carefully targeted support they receive". We work with a wide

range of partners and experts from outside teams to help us ensure that children of all abilities make progress and feel safe and happy at school. As a result of our good provision and facilities, our inclusive approach and our good results for pupils with SEN, many parents select our school even from outside our catchment. We welcome all pupils and will partner with you, as parents and carers, to ensure a good outcome for all. Our coordinator for pupils with Additional and/or Special Needs is available to chat through concerns after you have raised the issues with the Class Teacher.

## Educational Visits and Visitors



We believe that education should be as broad and exciting as possible, therefore each class aims to make an out of school Educational Visit every half term. We may ask for a parental contribution to enable trips to take place. We also offer Residential Trips for children in Years 5 and 6 during the Summer Term.



This might not be representative of an actual school trip

## Safeguarding



**Craig Robertson**  
Head Teacher



**Mrs Hunt**  
Parent Support  
Advisor



**Mrs Donnithorne**  
Year 5

Everyone at school has a responsibility to ensure the safety and wellbeing of all our children. We take this responsibility very seriously so that your children are safe. If there are concerns regarding the safety of your child we will discuss these with you openly and honestly. Everyone who works at our school has had safeguarding training. The school fully complies with its's legal responsibility to share any significant concerns with other agencies. Craig (Head Teacher) is the Designated Safeguarding Lead, Miss Donnithorne (Assistant Head) and Michelle Hunt (PSA) are the Deputies.

## Medication



If your child requires medication during the school day, please fill in the relevant form that is available from the school office. This form, along with the medication, should be handed to the office who will ensure that your child receives the right medicine at the right time.

## Car Parking



In order to keep our children safe, parents are asked not to bring their cars onto the school premises at the start and end of the school day and not to drive up to the gates of the school. Parking is available a short walk away in the Camel Trail car park. Our neighbours are really important to us and have always been supportive of the school. They often are getting to work at the start and end of the school day. Can I ask all parents and carers who drive to be considerate. You can park considerately by not driving to the school gates but parking along Berrycombe Vale or at the Scarlett's Well Car Park.



## School Lunches



For those children who don't choose to bring a packed lunch, Berrycoombe School endeavours to provide healthy and delicious school meals. A copy of the menu is available from the School Office and current prices. Children can select their meal each day and the selection always includes a vegetarian option and a salad bar. Mrs Cook (our School Cook) also provides meals which cater to a variety of dietary needs. Lunches should be paid for via 'parent pay.'

## Free School Meals



Under Government Legislation Free School Meals are available for all Key Stage 1 children (Reception, Yr 1 and Yr 2). Also for families who receive certain benefits. Application forms can be obtained from the School Office.

## School Website



At Berrycoombe School we have an excellent website, full of information to help you and your child. Just type in Berrycoombe School into your search engine to access this site. The contents of the site include; a calendar of upcoming events and dates, weekly updates on what's happening in each individual class and how you can support your child with their learning. There is also a page the children can use which links them to other safe Educational Sites.

## Online Learning

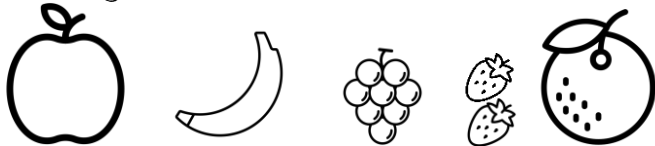
Our school uses a number of online learning APPS which support homework. These include:



## Snacks/Drinks

Children have access to cold water throughout the day. If your child is hungry, the Nurture Team can always provide toast and jam. If children bring in snacks or drinks for break time it is important that they are healthy and not overly sugary as this can make concentration in class difficult.

Healthy snack would include apples, bananas, and oranges



Sugary Snacks are not allowed, like chocolate, cakes or sweets.



## Homework

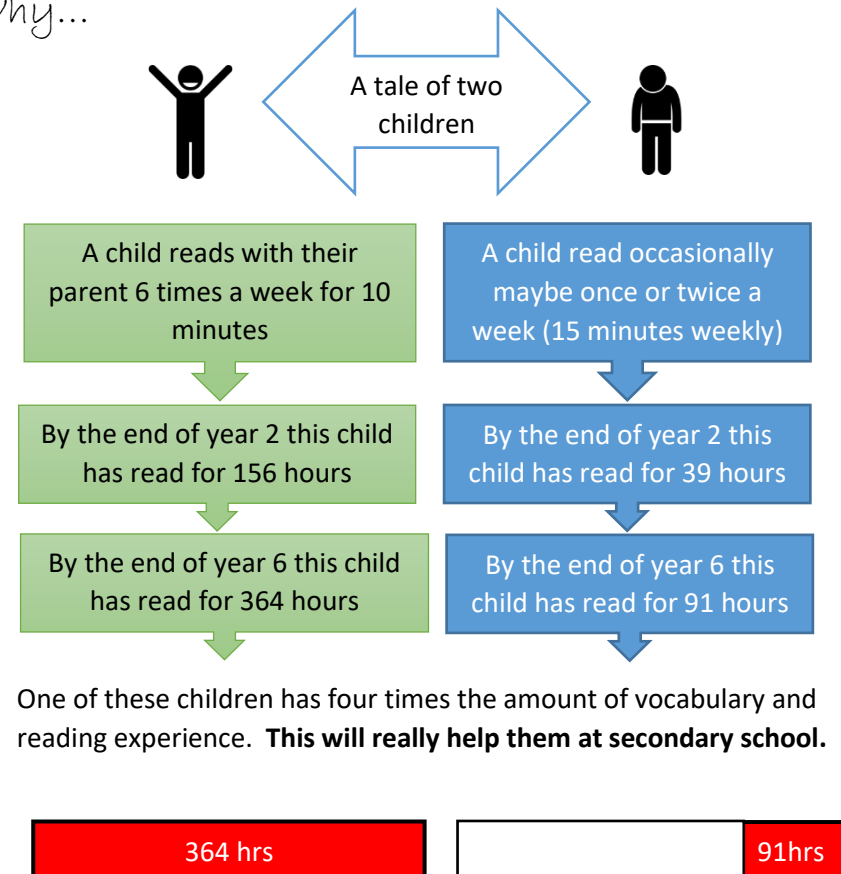


The **MORE** that you  
**READ**, the more things  
 you will **KNOW**.  
 The **MORE** that you  
**LEARN**, the more places  
 you'll **GO**.

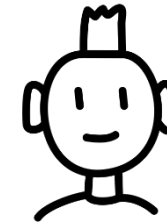
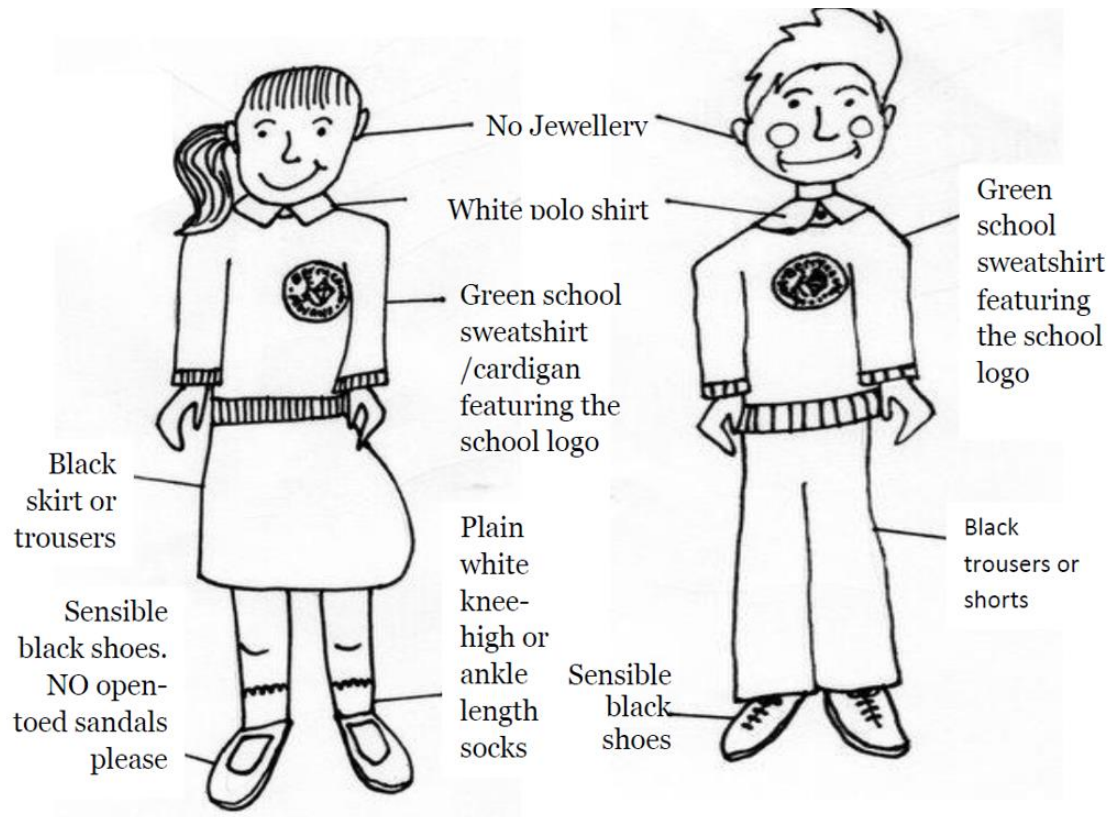
The most important piece of Homework you can do with your child is to read at home regularly. As a school we ask that you read at least 5 times a week but more would be fantastic.

The truth is it all adds up. Children that read regularly make better progress at school.

Why...



## School uniform



and please...  
No crazy hair.

**Why?**

It is good preparation for Secondary School where crazy hair is not allowed. Long hair needs to be tied back.

Children find it very distracting when someone in their class arrives with a new crazy hair colour.

We believe that uniform creates a sense of belonging and community.

In Summer a green-check summer-dress can also be worn with the school cardigan.

Waterproof Book bags are available at £3.75 and P.E. Bags at £3.00 are also available.

Cardigans, jumpers and Book Bags can be purchased from the School Office between 8.15am - 8:45am and 3.00pm - 3.15pm each day. School sweat shirts cost £9 and cardigans cost £11 (the wholesale cost) Book Bags are £3.75.

All uniform should be clearly marked with your child's name.

## P.E.

Promoting Physical Exercise and activity is an important part of being a Healthy School. Older children participate regularly and younger children have daily, shorter P.E. sessions. Most children do PE in the normal school clothes. Removing jumpers before running around.

### Swimming



**Kit Includes-** Swimming costume/trunks, towel, plastic bag for wet clothes.

Swimming is charged below cost (the school subsidises the total cost). You will be informed when your child will be swimming and we ask, where possible, that you pay in advance. If you are struggling to pay for swimming, please approach the PSA to discuss this.

### valuables



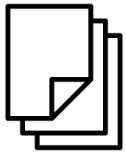
Children are asked NOT to bring valuables into school and this includes mobile phones. If you feel that your child needs a phone, please ensure that it is clearly marked with your child's name and that they hand it in at the Office at the beginning of the school day and then collect it at 3.15pm.

### Lost Property



Please make sure that all clothes are clearly marked with your child's name as this dramatically reduces the number of lost items and ensures that when things get lost (and they will) that eventually they will find their way back to you.

## School Documents and Official Information



Various school documents and Governors Public Minutes are available for parents to see. All our Policies, along with the Ofsted Report are available to read in full on the school website. If you do not have access to the internet please ask for a paper copy from the school office.

## Complaints



We endeavour to deal with any issue or concern promptly and informally. We have an open door policy. No time is a bad time to come and discuss something that may be bothering you or your child. A member of the Senior Management Team is on the gate every day (Rain or shine). In the first instance, please speak to your child's class teacher or the Head Teacher. If this should fail to resolve the situation, there is a formal Complaints Procedure that is available to all parents. A copy of this is available from the School Office and on the School Website.

If you have any more questions  
please do not hesitate to ask we are  
always happy to answer.